

Canterbury Bankstown Nuclear Imaging Autumn Bulletin: 2007



Dr. Phil Monaghan FRACP; Dr. Bob Dickinson FRACP FRACR and Dr. Pat Donnelly FRACP.

www.nuclearimaging.com.au



Canterbury Bankstown Nuclear Imaging (C/BNI) is a private, doctor owned non-corporate nuclear medicine practice and is located at 56 Meredith Street Bankstown (Telephone- 97084555).

C/BNI has provided the highest quality nuclear medicine diagnostic and therapeutic services to the Canterbury Bankstown region continuously since 1992.

C/BNI regularly upgrades equipment and facilities to guarantee "State of the Art" nuclear medicine practise.

C/BNI looks forward to providing the highest standard of individualized personal care to your patients into the future.

Billing

- All patients attending Canterbury Bankstown Nuclear Imaging are bulk billed through Medicare.

St George Nuclear Imaging (Kogarah) Closure:

- Following the retirement of Dr Norm Lyons, twenty two years after he founded Southern Nuclear Imaging's first practice at Kogarah, a decision was made to close the St George Nuclear Imaging practice. This enables the remaining physicians to focus on our Canterbury Bankstown Nuclear Imaging practice in Meredith Street in Bankstown. The result will be a further enhancement of the quality service provided to our referrers.

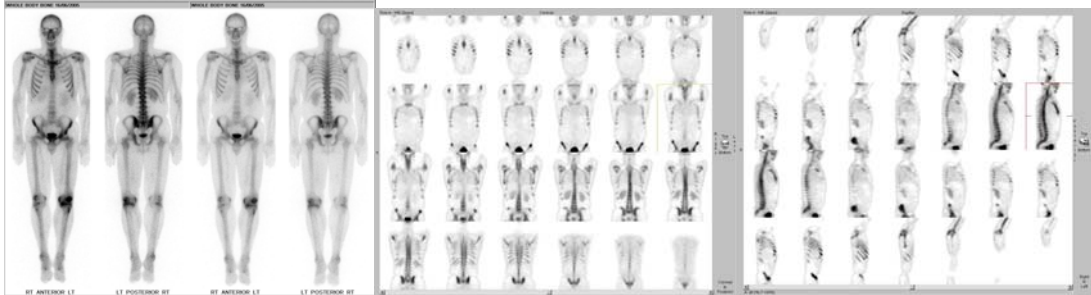
Further Equipment Upgrades:

- A "State of the Art" **Siemens E-Cam Dual Head Digital Gamma Camera** and associated enhanced image processing and output capability, using Siemens **E-Soft and Syngo** programs and an **Agfa Drystar 2000** will be installed at Canterbury Bankstown NI in May 2007.

Increased Functionality and Processing at C/B NI

- Includes: Advanced Cardiac Processing using the "Emory Cardiac Package".
Whole Body Sweeps and Whole Body SPECT
CD ROM production with DICOM viewing of digital images.

- Quick an easy whole Body sweeps.
- With the E-Cam/E-Soft combination quality Whole Body SPECT images from “Eyes to Thighs” can be acquired for bone, Gallium, Thallium and other scan types. See the examples below:



OHS Audit:

A recent comprehensive audit of our practice’s Occupational Health and Safety (OHS) program has met and in some areas exceeded existing benchmarks for OHS compliance within the private diagnostic imaging sector. This is in keeping with Southern Nuclear Imaging’s real commitment to quality assurance, quality control, risk management and occupational health and safety. You can rest assured that your patients will receive the best professional attention from our highly trained staff.

The Utility of Prone Imaging in Myocardial Perfusion Scanning.

One of the standard complementary procedures undertaken within the Southern Nuclear Imaging Group of practices is **PRONE imaging of all Myocardial Perfusion scan patients**. This approach provides a clear view the inferior wall of the myocardium free from the diaphragmatic and breast attenuation artefacts which frequently appear in supine imaging. The question it answers is: “is it a true defect or falsely attributed to attenuation” (JNM, 2003: p. 1638)? Gated SPECT also helps to answer this question yet a normal contraction pattern can appear in true myocardial perfusion defects in the presence of subendocardial infarction.

Future Newsletters:

- Nuclear Medicine Thyroid Scanning and Therapy: Its role in clinical practice.
- The utility of Nuclear Medicine in Paediatrics: A few snippets from Pat Donnelly.
- Prognostic Benefits of myocardial perfusion imaging.

Copies:

- Adobe Acrobat file (read from “Adobe Reader”) copies will be placed onto our Web Site at www.nuclearimaging.com.au . Any links referred to in the newsletter can be accessed directly by clicking on the blue underlined text within the .pdf document.

Need more Information?

- As always, Doctors Monaghan (Phil), Dickinson (Bob) and Donnelly (Pat) can be contacted at any time for comment or to answer questions or enquiries.
- Remember; if there is a particular topic which you would like Phil, Bob or Pat to address in the newsletters please do not hesitate to ask.

Southern Nuclear Imaging Practices-

Canterbury Bankstown Nuclear Imaging (Bankstown): Ph- **02 97084555**; Fax- 02 97906064
56 Meredith Street Bankstown.

Illawarra Nuclear Imaging (Wollongong):

Ph- **02 42261755**; Fax- 02 42273164

Shoalhaven Nuclear Imaging (Nowra):

Ph- **02 44231944**; Fax- 02 44230610

www.nuclearimaging.com.au